

PLANT DIAGNOSTIC LABORATORY

MISSION

The Plant Diagnostic Laboratory is a full-service plant health diagnostic facility sponsored by Rutgers Cooperative Extension, the outreach component of the School of Environmental and Biological Sciences and the New Jersey Agricultural Experiment Station. Our mission is to provide accurate and timely diagnoses of plant health problems for the residents of New Jersey.

Located on the Cook College campus, the Plant Diagnostic Laboratory provides plant health diagnostic services in cooperation with RCE faculty, staff, and other university personnel. The laboratory serves residential and commercial clientele.

DIAGNOSTIC SERVICES

- Disease and Insect Pest Diagnosis
- Plant and Weed Identification
- Insect Identification
- Fungus and Mold Identification
- Nematode Assays
- Acremonium Endophyte Screening
- Fungicide Resistance Screening
- Other Services Available by Contract



081816

HOW TO SUBMIT A SAMPLE

1. Sample submission forms may be obtained from your local county RCE office, by download at www.njaes.rutgers.edu/plantdiagnosticlab, or directly from the laboratory via phone request (732-932-9140) or fax request (732-932-1270). The laboratory will fax back the appropriate form.

There are seven distinct forms.

Tan - Landscape, Home Grounds, and Garden
Yellow - Golf and Landscape Turf
Pink - Commercial Growers
Blue - Insect and Tick Identification
Lilac - Fungus and Mold Identification
Green - Plant Identification
Gray - Nematode Soil Assay



2. Completely fill out the submission form.
3. Collect the appropriate sample. Carefully follow the directions on the submission form. Whole plants work best.
4. Properly package the sample, form, and payment.
5. Mail the sample to the appropriate address.
6. The laboratory will respond by fax and mail in a timely manner.

MAILING ADDRESS

Be sure to use appropriate address to help ensure timely delivery.

U.S. POSTAL SERVICE only:

Plant Diagnostic Laboratory
Rutgers, The State University of New Jersey
PO Box 550
Milltown, NJ 08850-0550

Physical address for

OTHER DELIVERY SERVICES only:

Plant Diagnostic Laboratory
Rutgers, The State University of New Jersey
Ralph Geiger Turfgrass Education Center
20 Indyk-Engel Way
North Brunswick, NJ 08902

CONTACT INFORMATION

Telephone: 732-932-9140

FAX: 732-932-1270

E-mail: clinic@njaes.rutgers.edu

Website:

www.njaes.rutgers.edu/plantdiagnosticlab

VISIT US

Take the NJ Turnpike to Exit 9. Take Rt. 18 North to Rt. 1 South. Take the second Ryders Lane exit, toward Milltown. Move to your left immediately upon entering onto Ryders Lane. Turn left at first break in the island onto Log Cabin Road and make an immediate right onto Indyk-Engel Way to parking area. The Education Center is up the hill on the left.

SAMPLE FEES

(All fees are per sample and subject to change without notice.)

Standard sample (most samples except fine turf):

\$40 in-state
\$95 out-of-state

Fine and sports turf:

In-state:
\$75 disease/insect diagnosis
\$120 disease/insect plus nematode assay*
Out-of-state:
\$95 disease/insect diagnosis
\$170 disease/insect plus nematode assay*
*Combination fee applies only to samples from same green, field, etc.

Nematode assay:

\$30 in-state (except fine turf)
\$60 in-state fine turf
\$95 out-of-state

Fungus and mold identification:

\$50 in-state microscope identification
\$100 out-of-state microscope identification

Insect identification:

\$40 in-state
\$95 out-of-state

Plant and weed identification:

\$40 in-state
\$95 out-of-state

Special tests:

Virus screening:

\$200 diagnostic screen
- individual test fee varies - call ahead

Fungicide resistance screening:

\$350 per compound
- call ahead to discuss specifics

Endophyte screening:

\$75 in-state
\$100 out-of-state

Other services negotiable.

Contracts and volume discounts available.

RUTGERS COOPERATIVE EXTENSION COUNTY OFFICES

Atlantic County
(609) 625-0056

Bergen County
(201) 336-6780

Burlington County
(609) 265-5050

Camden County
(856) 566-2900

Cape May County
(609) 465-5115

Cumberland County
(856) 451-2800

Essex County
(856) 228-3179

Gloucester County
(856) 307-6450

Hunterdon County
(908) 788-1339

Mercer County
(609) 989-6830

Middlesex County
(732) 398-5262

Monmouth County
(732) 431-7261

Morris County
(973) 285-8300

Ocean County
(732) 349-1246

Passaic County
(973) 305-5740

Salem County
(856) 769-0090

Somerset County
(908) 526-6293

Sussex County
(973) 948-3040

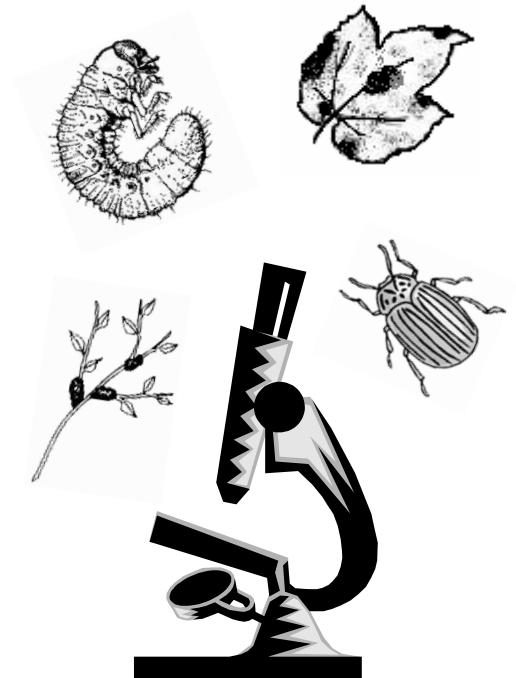
Union County
(908) 654-9854

Warren County
(908) 475-6505

RUTGERS

New Jersey Agricultural
Experiment Station

PLANT DIAGNOSTIC LABORATORY



Cooperating Agencies: Rutgers, The State University of New Jersey, U.S. Department of Agriculture, and County Boards of Chosen Freeholders. Rutgers Cooperative Extension, a unit of the Rutgers New Jersey Agricultural Experiment Station, is an equal opportunity program provider and employer.

www.njaes.rutgers.edu/plantdiagnosticlab