

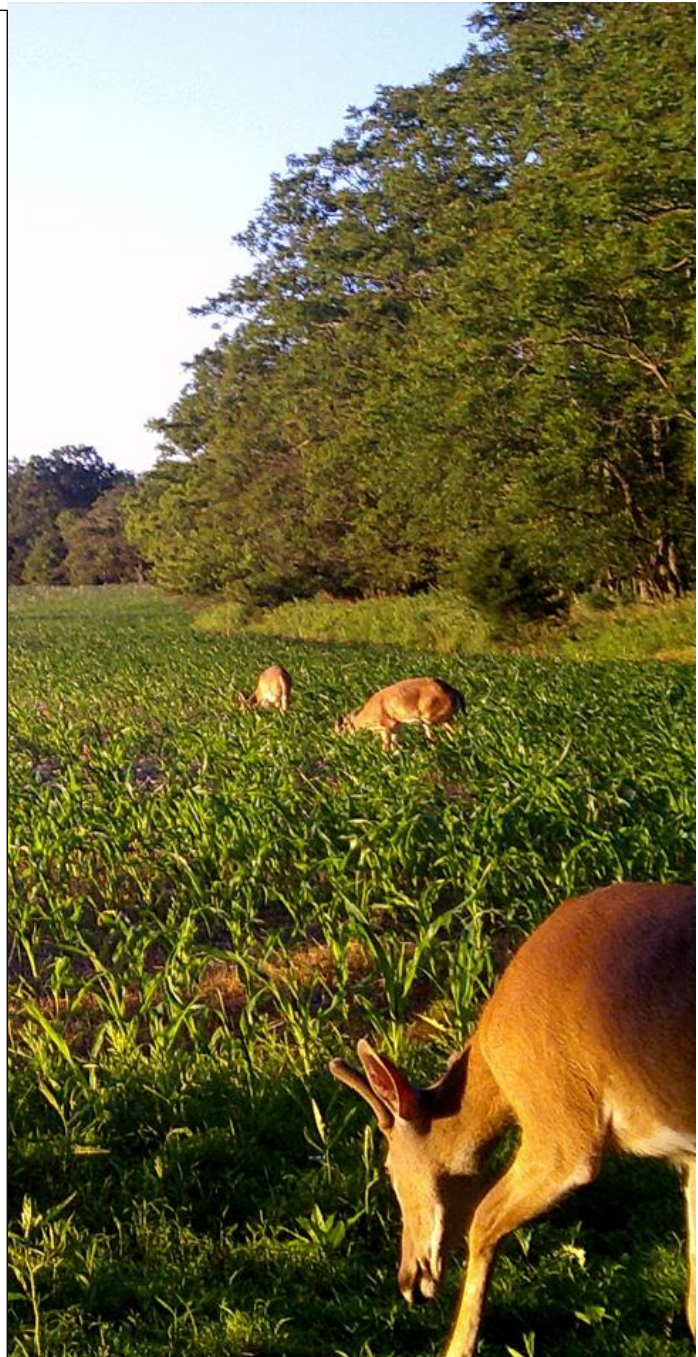
WE **R** HERE WHEN YOU NEED US

**White-Tailed Deer and
the Costs to Farmers'
Livelihoods: A Case
Study of New Jersey
Stories**

APPENDIX III

Crops Affected by Deer Damage

Joseph B. Paulin
Nazia N. Arbab
Brian J. Schilling



RUTGERS

New Jersey Agricultural
Experiment Station

Table of Contents

APPENDIX III	136
<i>Crops and Products Reported by Case Study Farmers Affected by Direct Deer Damage</i>	136
<i>Field Crops/Cash Grains and Oilseeds</i>	136
<i>Vegetables and Melons</i>	136
<i>Fruits and Berries</i>	137
<i>Nursery/Christmas Trees/Ornamentals</i>	137
<i>Forest/Woodlands</i>	137

APPENDIX III

Crops and Products Reported by Case Study Farmers Affected by Direct Deer Damage

Field Crops/Cash Grains and Oilseeds

- Alfalfa
- Field Corn
- Grain
- Hay (Grass Hay, Mixed Hay, Pasture)
- Oats
- Potatoes
- Rye (Rye Straw, Rye for Grain)
- Sorghum
- Soybeans
- Sweet Potatoes
- Wheat

Vegetables and Melons

- Asparagus
- Beans (Green Beans, Snap Beans)
- Broccoli
- Cabbage
- Cauliflower
- Cucumbers
- Eggplant
- Herbs
- Leafy Greens
- Lettuce
- Watermelon
- Okra
- Peppers
- Pumpkins
- Tomatoes
- Sweet Corn
- Specialty Corn
- Winter Squash
- Zucchini Squash

Fruits and Berries

- Raspberries
- Strawberries

Nursery/Christmas Trees/Ornamentals

- Christmas Tree
- Nursery
- Ornamentals
- Mums and Cut Flowers

Forest/Woodlands

- Forest (Preserved Habitat)
- Timber (Woodland)