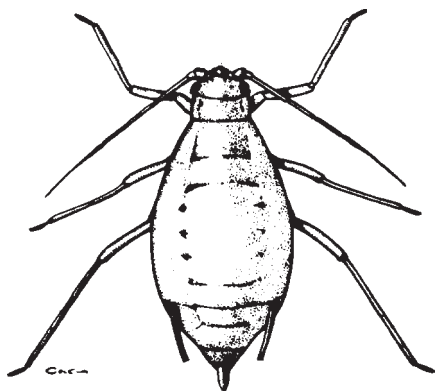


# PLANT & PEST ADVISORY

FRUIT EDITION \$1.50

APRIL 25, 2006



## Fruit IPM

*Dean Polk, Fruit IPM Agent and David Schmitt and Eugene Rizio, Program Associates, Tree Fruit IPM*

### Peach

✓ **Oriental Fruit Moth (OFM):** The first of two full insecticide covers for OFM control should have been applied by now. A second full insecticide cover should be applied on or about 375 DD. This is predicted to be on or about 5/16 in southern and central counties and 5/21 in northern counties. The first and second spray dates for the southern, central, and northern counties are as follows:

County / Region	1 <sup>st</sup> Spray Date	2 <sup>nd</sup> Spray Date
Gloucester – Southern	4/17-4/19	5/4-5/6
Monmouth – Central	4/20-4/21	5/8-5/10
Hunterdon - Northern	5/5-5/6	5/21-23

✓ **Green Peach Aphids (GPA):** A few aphid colonies have been found in several orchards in southern counties. No blocks with populations above threshold have been seen. At this time of year, growers should not tolerate more than 2 colonies per tree on peach or 1 colony per tree on nectarines. While this is a very conservative estimate for peaches, aphid populations should definitely not be tolerated on nectarines, since they will directly damage and deform the fruit. Lannate, Thiodan, and Provado/Actara (neonicotines) are labeled for control, with Provado and Actara giving the best (and most expensive) control. Keep in mind that of all the spray targets at this time of the season, Provado only controls aphids and tarnished plant bug, and suppresses stink bugs and plum curculio. Actara will control plum curculio, tarnished plant bug, and stink bugs (at a higher rate of 4.5 to 5.5 oz/A as opposed to 3-4 oz/A for aphids). Neither of these two products will control OFM. The OP's, Lannate, and the pyrethroids will control OFM. In order to minimize costs, growers may wish to delay aphid treatments if possible, use a pyrethroid or OP only, or if needed, use a pyrethroid plus a low rate of a neonicotinic compound.

✓ **Tarnished Plant Bugs and Stink Bugs (TPB and SB):** This is the time of the season when treatments are also targeted for these two pests. Growers who have experienced past problems have either had weedy ground covers and/or had plantings with considerable wooded borders. Our early sampling has shown that the first stinkbugs seen were in border rows next to woody areas. Where hedgerows, weeds, and woods are near peach trees, growers should be particularly mindful of catfacing insect control.

SEE IPM ON PAGE 2

## INSIDE

**Fruit IPM** ..... 1

**Calendar of Events** ..... 3

**Recycle Those Plastic Pesticide Containers - Get One Core Credit** ..... 3

✓ **Blossom Blight:** The weather during bloom has been generally unfavorable for blossom blight infections. Once shuck off begins growers can begin a sulfur based program. This does not apply to blocks known to have peach scab inoculum. In these blocks growers should continue a Captan based program until about third cover. Some blossom cankers are appearing in varieties considered very susceptible to constriction canker. Constriction cankers look very similar to blossom blight at this time.

✓ **Peach Scab:** If a minimal or incomplete spray program was used during 2005, or if scab was a problem, large amounts of overwintering scab inoculum may be present on last year's wood. Fruit is infected from conidia on overwintering twig lesions. Spores are splashed onto the fruit during rainy periods from shuck split through the following six weeks. The lesions appear from 40 to 70 days after infection. They first appear as small (1-2 mm) green spots, but enlarge to 2-3 mm and become black as spores are produced. Most lesions are found on the shoulders of the fruit where spores were splashed down from the twig. Some will coalesce, covering larger areas of the fruit, and cause cracking of the fruit surface. Since conidia are now being formed, scab sprays should go on now. Combinations that include Flint, Bravo, or Captan

are suggested. Gem is a new fungicide labeled for peach. Gem is a strobilurin fungicide like Flint, and is rated "good" for scab control.

**Apple**

✓ **Apple Scab:** Continue solid applications with very effective materials. We are now at peak spore discharge in all growing regions. Cedar apple rust is also still a concern. The strobilurin fungicides, Flint and Sovran are considered weak rust materials and should be combined with a half rate of an EBDC where rust is known to be a problem.

✓ **Fire Blight:** Blossom sprays using antibiotics should be applied on a 3-7 day schedule or anytime temperatures are 65°F or above and the relative humidity is 60% or above. Refer to the production guide for recommended materials and rates. According to Skybit reports, fireblight cankers are active, but so far the weather has not been conducive for infection. Precipitation in northern counties can provide infection periods over the next several days.

✓ **Plum Curculio (PC):** PC adults are active. Recent activity has been seen on pears. This is a key insect target from now through early June. Any petal fall applications made on apples or pears should include control for PC.

**Scouting Calendar**

The following table is intended as an aid for orchard scouting. It should *not* be used to time pesticide applications. Median dates for pest events and crop phenology are displayed. These dates are compiled from observations made since 1995 in Gloucester County. Events in northern New Jersey should occur 7-10 days later.

Pest Event or Growth Stage	Approximate Date	2005 Observed Date
1/4" Green Tip Red Delicious	March 27 +/- 10 Days	March 28
First Apple Scab Infection Period	April 5 +/- 18 Days	April 22
Pink Peach	April 10 +/- 9 Days	April 3
Tight Cluster Red Delicious	April 8 +/- 10 Days	April 10
Oriental Fruit Moth Biofix	April 8 +/- 10 Days	April 2
First Blossom Blight Infection (Brown Rot)	April 10 +/- 5 Days	Not yet observed
Full Bloom Peach	April 16 +/- 7 Days	April 10
Pink Red Delicious	April 13 +/-11 Days	April 16
Green Peach Aphid in Beating Trays	April 15 +/- 14 Days	April 20
Petal Fall Peach	April 16 +/- 14 Days	April 22
Oriental Fruit Moth - 175 DD	April 19 +/- 4 Days	April 20
Plum Curculio Injury	May 10 +/- 11 days	April 20
Oriental Fruit Moth - 375 DD	May 10 +/- 8 Days	

**Blueberry**

**Leafrollers Larvae and Adults:** Tray samples for larvae have yielded very low numbers, although larvae are present. Green fruitworm and gypsy moth have been seen at low levels. Occasional obliquebanded leafroller larvae are also present. The highest level seen was 0.4 larvae/100 clusters. This was a gypsy moth population in the New Lisbon area. The first flight of redbanded leafroller adults increased this past week, with some farms in the Hammonton area having trap counts over 300 moths per trap. These occasional high counts represent populations that deserve extra monitoring when larvae start to appear in the near future.

**Cranberry Weevil (CB):** About 40% of our samples were positive for weevils in the past week. Only 2% of samples showed populations above threshold that needed treatments. Overall populations have decreased, largely due to insecticides being applied in the fields that had high populations.

**Plum Curculio(PC):** Adult activity has started to increase, particularly around field edges, although curculio activity is still present only in isolated areas. About 4% of our samples have been positive for PC adults. Scouting should focus on early varieties, and fields with woods borders. If egg laying scars and adults

SEE BLUEBERRY ON PAGE 3

## Calendar of Events

**April 26, 2006**, 6:30 p.m. - Community Outreach Meeting, John Berry, Penn State Cooperative Extension will discuss Human Resource Management at Peaceful Valley Orchards, Pittstown, NJ. Contact: Sharon Kinsey, RCRE of Salem County at 856-769-0090.

**May 17, 2006**, 6:15 - Twilight Tree and Small Fruit Meeting at Robson Farm, 505 Monmouth Road, Wrightstown, New Jersey. Contact Jerry Frecon at RCRE of Gloucester County at 856-307-6450, ext. 1 for information.

---

### BLUEBERRY FROM PAGE 2

are seen, there are no treatments that can be applied for this insect until bees are removed.

**Thrips:** Thrips are being scouting with small beating trays, but none have been found in scouted fields as of this writing.

**Mummy Berry:** We are at the end of the primary infection phase, which has been very dry with the exception of the last few days. It is unlikely that we will see much of primary strikes, although there may be some flower infections that develop.

**Anthracnose:** Now is the time to start treatments for Anthracnose control. Abound, Captan, Pristine, or Ziram are registered for control. For more in depth information on diseases, you can also go to the following Web site: <http://rci.rutgers.edu/~oudemans/>

## Recycle Those Plastic Pesticide Containers – Get One Core Credit

The NJ Department of Agriculture announces its 2006 schedule for a *free* program to recycle empty plastic pesticide containers at the Cumberland County Solid Waste Complex.

Non-refillable, high-density polyethylene # 2 (HDPE #2) containers used by agricultural, professional and commercial pesticide applicators will be accepted at the collection sites. In addition, HDPE #2 plastic pales, bulb crates, and similar items will be accepted.

Pesticide containers must be no larger than 55 gallons and triple rinsed. The MSDS booklet and the lid must be removed. The metal handles must be removed from the plastic pales.

The program is open to anyone who holds a New Jersey Department of Environmental Protection pesticide license including state, county and municipal government agencies. Participants must follow the processing guide or the material will be rejected. You do not need a pesticide license to participate in the program if non-pesticide containers are recycled.

One core credit will be issued to NJDEP pesticide license holders who bring in properly rinsed pesticide containers. To receive credit, participants must bring their pesticide license to the collection site and must follow the processing steps. Pesticide credits will not be issued for recycling items other than pesticide containers.

Contact Karen Kritz, Recycling Program Manager, at (609) 984-2506 or [karen.kritz@ag.state.nj.us](mailto:karen.kritz@ag.state.nj.us) with questions about this recycling program or other recycling questions.

### 2006 Pesticide Container Collection Program Schedule

**Location:** Cumberland County Solid Waste Complex, 169 Jesse Bridge Road (located off Route 55 Exit 29), Deerfield, New Jersey

**Time:** 9 a.m. to Noon

**Dates:** Friday, May 19, Friday, June 23, Friday, July 28, Friday, August 25

## Insect Trap Counts

### Tree Fruit Trap Counts – Southern Counties

Week Ending	STLM	TABM-A	CM	AM	OFM-A	DWB	OFM-P	TABM-P	LPTB	PTB
4/16/06	40				4		29			
4/23/06	50				59		67			

### Tree Fruit Trap Counts – Northern Counties

Week Ending	STLM	TABM-A	CM	AM	OFM-A	DWB	OFM-P	TABM-P	LPTB	PTB
4/9	630									
4/16	815				4		5			
4/23	1250				—		23.2			

### Blueberry Trap Counts – Atlantic County

Week Ending	CBFW	RBLR	OBLR	SNLH	OB	BBM
4/9		184				
4/16		209				
4/24		179				


### Blueberry Trap Counts – Burlington County

Week Ending	CBFW	RBLR	OBLR	SNLH	OB	BBM
4/9		54				
4/15		77				
4/24		110				

Key: CBFW = Cranberry Fruitworm, RBLR = Redbanded Leafroller, OBLR = Obliquebanded Leafroller, SNLH = Sharpnosed Leafhopper, OB = Oriental Beetle, BBM = Blueberry Maggot

FIRST CLASS  
POSTAGE PAID  
PERMIT #576  
MILLTOWN, NJ 08850

NJ AGRICULTURAL EXPERIMENT STATION  
**RUTGERS**  
COOPERATIVE RESEARCH & EXTENSION  
Plant & Pest Advisory  
Rutgers' Cook College  
18 College Farm Road  
New Brunswick, N.J. 08901-8551



## PLANT & PEST ADVISORY

### FRUIT EDITION - CONTRIBUTORS

#### Rutgers Cooperative Extension Specialists and Program Associate

George Hamilton, Ph.D., Pest Management  
Norman Lalancette, Ph.D., Plant Pathology  
Bradley A. Majek, Ph.D., Weed Science  
Cesar Rodriguez-Saona, Ph.D., Cranberry/Blueberry Entomology  
Peter W. Shearer, Ph.D., Entomology  
Daniel Ward, Ph.D., Pomology  
Gail Lokaj, Program Associate in Pomology

#### NJAES/Cook College

Joseph Goffreda, Ph.D., Breeding

#### Rutgers Cooperative Extension Agricultural Agents and Program Associates

Atlantic County, Gary C. Pavlis, Ph.D. (609-625-0056)  
Gloucester County, Jerome L. Frecon (856-307-6450)  
Hunterdon County, Winfred P. Cowgill, Jr. (908-788-1338)  
Morris County, Peter J. Nitzsche (973-285-8300)  
Passaic, Elaine F. Barbour, Agric. Assistant (973-305-5740)  
Warren County, William H. Tietjen (908-475-6505)  
Fruit IPM, Dean Polk (609-758-7311)  
Gene Rizio, Program Associate (856-566-2900)  
David Schmitt, Program Associate (856-307-6450)

#### Newsletter Production

Jack Rabin, Associate Director for Farm Services, NJAES  
Cindy Rovins, Agricultural Communications Editor

For back issues, visit our web site at: [www.rce.rutgers.edu/pubs/plantandpestadvisory](http://www.rce.rutgers.edu/pubs/plantandpestadvisory).

**Pesticide User Responsibility:** Use pesticides safely and follow instructions on labels. The pesticide user is responsible for proper use, storage and disposal, residues on crops, and damage caused by drift. For specific labels, special local-needs label 24(c) registration, or section 18 exemption, contact RCRE in your County.

**Use of Trade Names:** No discrimination or endorsement is intended in the use of trade names in this publication. In some instances a compound may be sold under different trade names and may vary as to label clearances.

**Reproduction of Articles:** RCRE invites reproduction of individual articles, source cited with complete article name, author name, followed by Rutgers Cooperative Research & Extension, Plant & Pest Advisory Newsletter.