

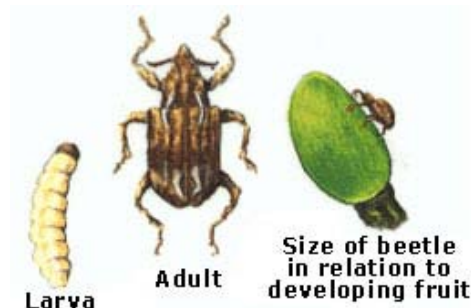
# PLANT & PEST ADVISORY

FRUIT EDITION \$1.50

MAY 31, 2005

## Fruit IPM

*Dean Polk, Fruit IPM Agent and David Schmitt and Eugene Rizio, Program Associates in Tree Fruit IPM*



*Plum Curculio*

## INSIDE

**Fruit IPM** ..... 1

**Plan Now for Bird Management in Fruit** ..... 3

**Calendar of Events** ..... 3

### Peach

✓ **Oriental Fruit Moth (OFM):** The first generation flight has “bottomed out” in southern counties. The northern county flight should bottom out within the next 7-10 days. Once the flight has bottomed out growers who plan to employ mating disruption should begin placing ties or adding sprayable pheromone.

✓ **Plum Curculio (PC):** PC is still actively causing fruit injury, but should be tapering off soon. Growers should continue to include effective materials. Note that Asana and Lannate are weak curculio materials.

✓ **Catfacing Damage, Stinkbugs and Tarnished Plant Bugs:** If using Imidan for catfacing insect control, do not cut the rate. You may have to use the full 3 lb/Ac, especially if orchard blocks have wooded borders or weedy groundcover. Other materials that can be used around fruit thinning activities include the pyrethroids – Asana, Ambush, Pounce and Warrior. Lannate can also be used but is not the best control for catfacing insects. Lannate and pyrethroid materials increase risk for mite flare-ups.

✓ **Tufted Apple Budmoth (TABM):** **Tufted Apple Budmoth (TABM):** Treatments for TABM should be focused where TABM is a known problem. This includes most areas of the state - Mercer County and south. Degree day (DD) timed treatments are outlined for either alternate middle (AM) applications where 4 sprays are needed per generation, full cover every middle (EM) applications where 2 sprays are needed per generation, or with the insect growth regulator (IGR), Intrepid, which should be applied full cover with 2 sprays per generation.

Timings for TABM control are in the following table, updated since last week.

County Area	Spray Type		
	AM	EM	Intrepid - EM
Southern	1 <sup>st</sup> 6/8-9, 2 <sup>nd</sup> 6/13-14	1 <sup>st</sup> 6/11-12	1 <sup>st</sup> 6/10-11
Central	1 <sup>st</sup> 6/9-10, 2 <sup>nd</sup> 6/15-16	1 <sup>st</sup> 6/11-12	1 <sup>st</sup> 6/10-11
Northern	1 <sup>st</sup> 6/11-12, 2 <sup>nd</sup> 6/18-19	1 <sup>st</sup> 6/14-15	1 <sup>st</sup> 6/12-13

### Apple

✓ **Codling Moth (CM):** **Codling Moth (CM):** The first catch or biofix points have been reached in all areas of the state. Timing for the first of 2 sprays for the 1<sup>st</sup> generation is set at 250DD<sub>50</sub> and again at 550DD for standard insecticides OPs, carbamates and pyrethroids, and the newer

*SEE IPM ON PAGE 2*

**IPM FROM PAGE 1**

chemistries Assail and Calypso. Recent work done in Pennsylvania indicates that Assail is effective at 2.5 ozs. plus 0.5% summer oil/acre, and Calypso is effective at 6 ozs./acre. The timings for the IGR's - Intrepid and Esteem are at 150DD and again at 450DD. The following chart outlines these times for southern, central and northern counties. Growers should try to time sprays the best way possible and not cut insecticide rates.

County Area	Application and Insecticide Type	
	Standard Insecticides	IGR's
Southern	1 <sup>st</sup> 6/1-6/2, 2 <sup>nd</sup> 6/16-17	1 <sup>st</sup> past, 2 <sup>nd</sup> 6/12
Central	1 <sup>st</sup> 6/4-5 2 <sup>nd</sup> 6/19-6/20	1 <sup>st</sup> 5/31-6/1 2 <sup>nd</sup> 6/14-15
Northern	1 <sup>st</sup> 6/6-7, 2 <sup>nd</sup> 6/22-23	1 <sup>st</sup> 5/29-30, 2 <sup>nd</sup> 6/17

✓ **Tufted Apple Budmoth (TABM):** See peach section.

✓ **Aphids: Spirea and Apple (green) Aphids:** Populations are just beginning to build. Growers using Assail or Calypso for codling moth control will also control aphids.

✓ **Apple Scab and Other Diseases:** Scab is present in very few orchards statewide at present. Starting early to mid June, summer diseases (including black rot and white rot) also become important to control. Combinations with Topsin and Captan have been the most economical for broad spectrum control for scab and summer diseases. While several other materials, including the EBDC's, the SI's, and the strobilurins give good scab control, Sovran (a strobilurin) is the only other good scab material that is also very effective for summer rot control, sooty blotch and fly speck. Use higher rates of Sovran where scab is present. Topsin should not be relied upon where scab is present, since scab strains that are resistant to Topsin are common.

**SEE IPM ON PAGE 3**

**Note: The Blueberry information was not available at publication time.**

**Insect Trap Counts**

**Tree Fruit Southern Counties**

Week ending	STLM	TABM-A	CM	AM	OFM-A	DWB	OFM-P	TABM-P	LPTB	PTB
5/6/05	118	0			30		9	0	0	0
5/13/05	102	0	10		68		8	0	7	0
5/20/05	107	8	5		29	1	10	14	51	0
5/27/05	1	4	4		13	0	1	8	58	0

**Northern Counties**

Week ending	STLM	TABM-A	CM	AM	OFM-A	DWB	OFM-P	TABM-P	LPTB	PTB
5/6/05	230				0		33			
5/13/05	357	1	2		0		37	1		
5/20/05	122	3	3		0		24	7		
5/27/05	6	9	1		0		14	7		

Key: STLM = Spotted Tentiform Leafminer, TABM = Tufted Apple Budmoth (A – apple, P – Peach), CM = Codling Moth, AM = Apple Maggot, OFM = Oriental Fruit Moth (A – apple, P – Peach), LPTB = Lesser Peachtree Borer, PTB = Peachtree Borer

**Blueberry Trap Counts – Atlantic County**

Week Ending	CBFW	RBLR	OBLR	SNLH	OB	BBM
5/6	0	125				
5/13	0	32				
5/20	1.5	4.8				

**Blueberry Trap Counts – Burlington County**

Week Ending	CBFW	RBLR	OBLR	SNLH	OB	BBM
5/6	0	20				
5/13	0.1	10				
5/20	0.3	14				

Key: CBFW = Cranberry Fruitworm, RBLR = Redbanded Leafroller, OBLR = Obliquebanded Leafroller, SNLH = Sharpnosed Leafhopper, OB = Oriental Beetle, BBM = Blueberry Maggot

## Plan Now for Bird Management in Fruit

*Reprinted from Vermont Vegetable and Berry News - June 1, 2005, University of Vermont Extension and adapted from 2005 Cornell small fruit pest management guide.*

Damage to fruit by birds is a serious problem in many areas. Visual scare devices such as whirlers, streamers, reflectors, and plastic hawk and owl models are seldom practical if used alone. They should be supplemented with sound devices such as exploders, alarms, or recorded devices. For sound devices to be effective, their location and the frequency of sounds should be changed daily. They also should be in place before the fruit ripens. Some towns have passed ordinances regulating the use of sound devices.

The most effective sound device is Bird-Gard with species-specific bird distress calls programmed in the device. One unit with 4 speakers is effective on 10 acres. Several types of netting, such as plastic, nylon, cotton, and polyethylene, are marketed for protecting fruits. A light-weight acrylic netting that can be draped directly over plants is available. It does not require support and it does not interfere with sunlight, pollination, or growth. Most netting is expensive, but it be reused for many years. Some growers are finding success repelling birds with newer formulations of methyl anthranilate (Fruit Shield or Goose Chase). Methyl anthranilate is an aromatic acid ester that occurs naturally in grapes, the synthetic version is a food-grade compound that is used to impart grape flavor. Apparently, this is offensive to birds, and they will not eat vegetation treated with it. □

## Calendar of Events

**June 29, 2005** - 5:00 p.m. Fruit Research and Picnic, Rutgers Agricultural Research and Extension Center, Centerton, NJ. For information contact: Jerry Frecon at 856-307-6450 Ext 1 or [frecon@rcrc.rutgers.edu](mailto:frecon@rcrc.rutgers.edu). Pre-registration is requested.

**July 28, 29, 30, & 31, 2005** – New Jersey Peach Festival at the Gloucester County 4-H Fairgrounds, Rte. 77, Mullica Hill, NJ. For information contact: Jerry Frecon 856-307-6450 Ext 1 or [frecon@rcrc.rutgers.edu](mailto:frecon@rcrc.rutgers.edu).

## Scouting Calendar

*IPM FROM PAGE 2*

The following table is intended as an aid for orchard scouting. It should *not* be used to time pesticide applications. Median dates for pest events and crop phenology are displayed. These dates are compiled from observations made over the past 5-10 years in Gloucester County. Events in northern New Jersey should occur 7-10 days later.

Pest Event or Growth Stage	Approximate Date	2005 Observed Date
Apple Scab Lesions visible	April 28 +/- 7 days	May 12
Oriental Fruit Moth – Shoot Flagging	May 13 +/- 2 days	Not yet observed
White Peach Scale Crawlers	May 19 +/- 4 Days	Not yet observed
Codling Moth -150 DD Timing	May 19 +/- 3 Days	May 26
Codling Moth -250 DD Timing	May 28 +/- 7 Days	June 1
TABM 1 <sup>st</sup> generation 475 DD Timing	June 1 +/- 6 Days	
San Jose Scale Crawlers	June 3 +/- 7 days	
Peach – Pit Hardening	June 16 +/- 8 days	

FIRST CLASS  
POSTAGE PAID  
PERMIT #576  
MILLTOWN, NJ 08850

NJ AGRICULTURAL EXPERIMENT STATION  
**RUTGERS**  
COOPERATIVE RESEARCH & EXTENSION  
Plant & Pest Advisory  
Rutgers' Cook College  
18 College Farm Road  
New Brunswick, N.J. 08901-8551



## PLANT & PEST ADVISORY FRUIT EDITION - CONTRIBUTORS

### Rutgers Cooperative Extension Specialists and Program Associate

George Hamilton, Ph.D., Pest Management

Norman Lalancette, Ph.D., Plant Pathology

Peter W. Shearer, Ph.D., Entomology

Gail Lokaj, Program Associate in Pomology

### NJAES/Cook College

Joseph Goffreda, Ph.D., Breeding

### Rutgers Cooperative Extension Agricultural Agents and Program Associates

Atlantic County, Gary C. Pavlis, Ph.D. (609-625-0056)

Gloucester County, Jerome L. Frecon (856-307-6450)

Hunterdon County, Winfred P. Cowgill, Jr. (908-788-1338)

Morris County, Peter J. Nitzsche (973-285-8300)

Warren County, William H. Tietjen (908-475-6505)

Fruit IPM, Dean Polk (609-758-7311)

Meredith Compton, Program Associate (908-788-1338)

Gene Rizio, Program Associate (856-566-2900)

David Schmitt, Program Associate (856-307-6450)

### Newsletter Production

Jack Rabin, Associate Director for Farm Services, NJAES

Cindy Rovins, Agricultural Communications Editor

For back issues, visit our web site at:

[www.rce.rutgers.edu/pubs/plantandpestadvisory](http://www.rce.rutgers.edu/pubs/plantandpestadvisory).

**Pesticide User Responsibility:** Use pesticides safely and follow instructions on labels. The pesticide user is responsible for proper use, storage and disposal, residues on crops, and damage caused by drift. For specific labels, special local-needs label 24(c) registration, or section 18 exemption, contact RCRE in your County.

**Use of Trade Names:** No discrimination or endorsement is intended in the use of trade names in this publication. In some instances a compound may be sold under different trade names and may vary as to label clearances.

**Reproduction of Articles:** RCRE invites reproduction of individual articles, source cited with complete article name, author name, followed by Rutgers Cooperative Research & Extension, Plant & Pest Advisory Newsletter.